

EIKI

www.eiki.my



EIKI Interactive Whiteboard

EIKE PRO 85C

Leaflet & Specification

Eiki International, Inc

EIKI | Interactive Whiteboard

Fast & Reliable Multi Touch Solution

EIKI Pro 85C are used optical touch solution and its technology to support up to 10 touches Write with your finger, a pen or any other object.

Enamel Ceramic Surface

www.eiki.my

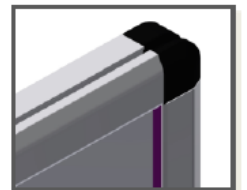
The Ceramic surface is the most ideal projection surface to use for interactive whiteboard system and it eliminates hotspots and no marks form erasing (dray-erasable).

Low Cost Ownership

Easy to maintenance and deliver economical features to support intuitive durable mechanical frame that meets on customer satisfaction by its lowering total costs of ownership



4 Optical Camera



Round Cornor

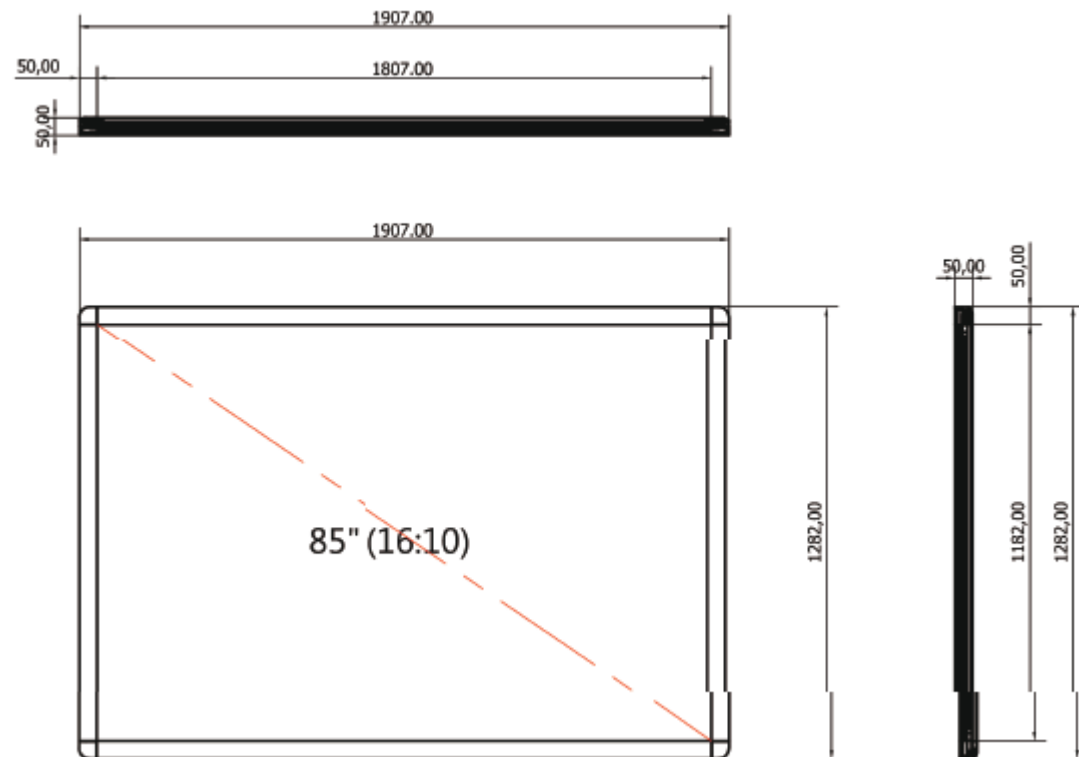
Physical Specifications

Model	Inch	Active board size	Board size	Screen rate
		Height x Width (mm)		
EIKI Pro 85 C	85"	1185 x 1807	1282 x 1907	16 : 10

Specifications

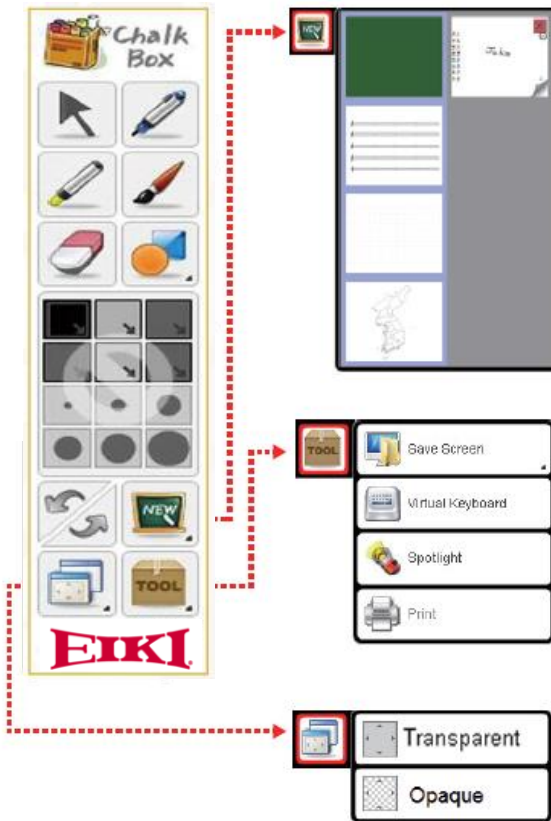
Item	Specifications
Screen	Enamel Ceramic Surface is durable and optimized for projection.
Touch System	T3k Optical Touch sensor - 2 Camera Standard (up to 4 points) - 4 Camera Option (up to 10 points)
Touch Operation	Finger, Stylus or any object to operate
Touch Resolution	32767 x 32767
Touch Response Time	7 ms to 13 ms (Typical Response time 9 ms)
Touch Response Rate	125 responses per second (rps)
Operation Temperature	Operating : 0~40°C Storage : - 20~60°C Humidity : 10% to 90% RH, non-condensation
PC Interface	USB 2.0 compatible (full speed). HID compliant, Plug & Play compatible
Operating Systems	Windows XP, Vista, Windows 7, Windows 8, Linux, Mac OS X, Android (T3k Kernel device driver needed)
Power Supply	5V DC Power Adapter
Board Weight	25 KG (85")
Warranty	2 Year limited

Dimensions – 85"



EIKI Writing Software – Chalk Box

Chalk Box software makes use of the touch capability to outline, draw, erase, and save images on to the computer.



- Pen, Marker Pen, and Brush – Can the change the color and thickness of each pen, marker or brush) Figure (Circle, rectangles and triangles)
- Eraser
- Save Screen
- Virtual Keyboard
- Spot Light
- Printing
- Shader screen - it allows the annotation on top of the video or flash application